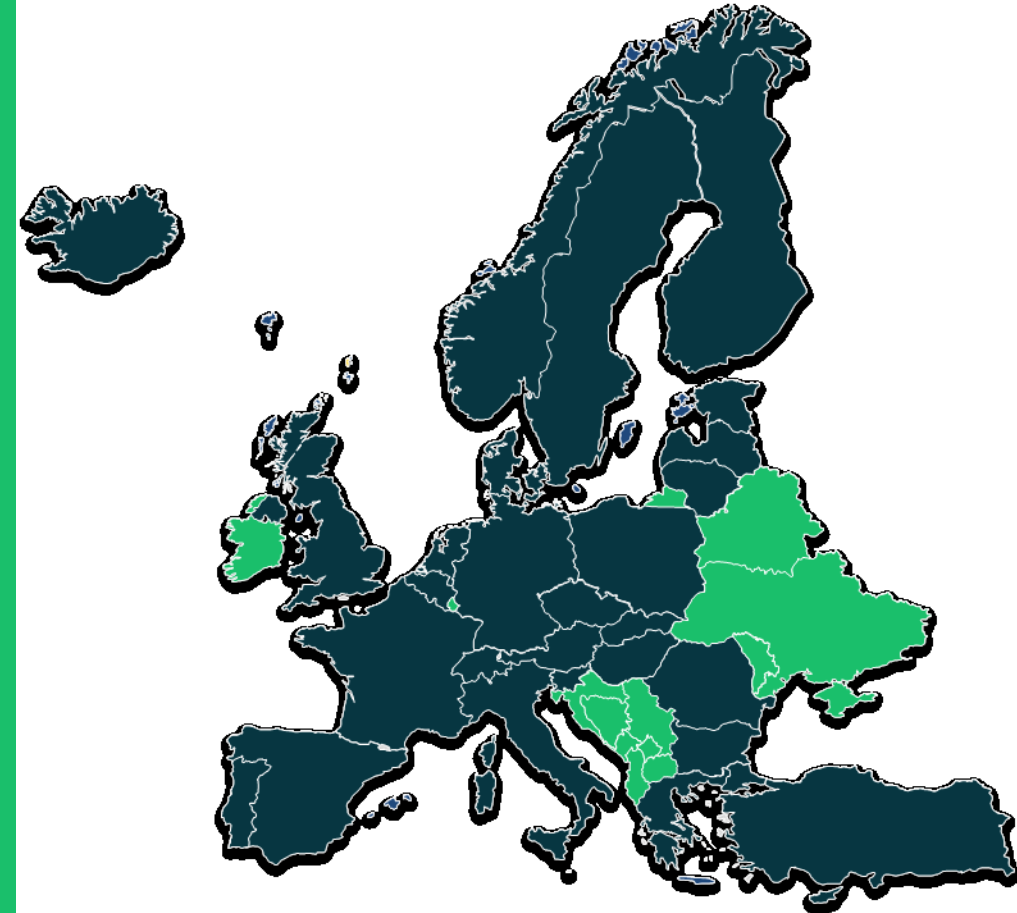




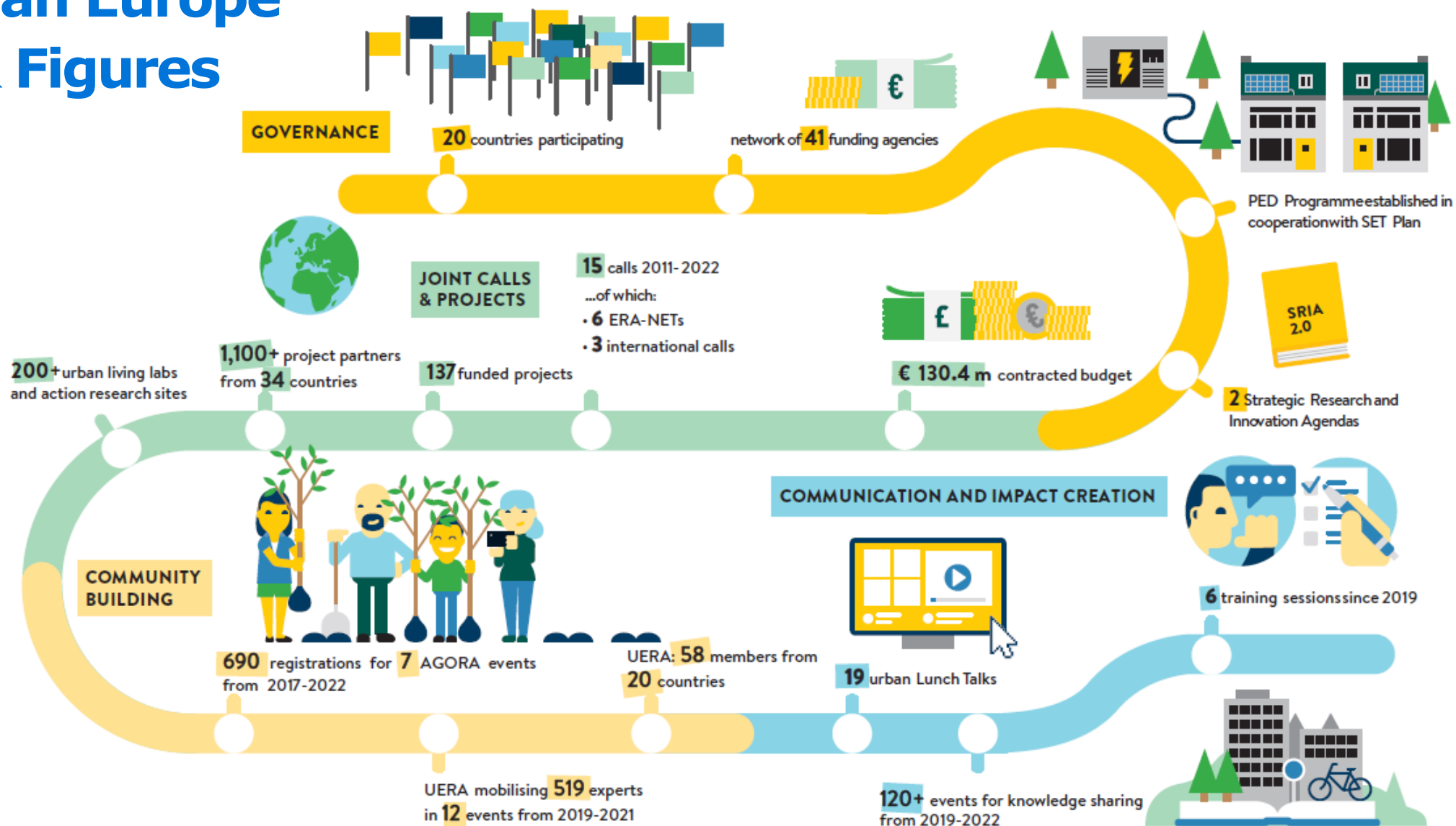
Driving Urban Transitions to a sustainable future

The DUT Partnership

- A public-public partnership, co-funded by 27 European countries and the European Commission
- DUT Consortium of 60+ partners
 - National and regional R&I funders
 - National or regional authorities and agencies dealing with urban policy
 - Research performing and other organisations as strategic partners
- approx. 450 Mio indicative budget for 2022-2028
 - DUT Call 2022 provides more than Euro 70mill



JPI Urban Europe Facts & Figures





DUT Vision

The DUT Partnership steps up the game to tackle urban challenges. Through R&I funding and capacity building we enable local authorities and municipalities, business and citizens to make global strategies into local action. We develop the skills and tools to make urban change happen and boost the urgently needed urban transformations.

The DUT Transition Pathways

integrated approaches for urban transformations and
entry points towards urban climate neutrality and sustainability



**Positive Energy
Districts and
Neighbourhoods**
transforming the urban
energy system



**Circular Urban
Economies**
an integrated approach
for urban greening and
circularity transitions



15-minute Cities
rethinking the urban
mobility system and
space

Positive Energy Districts (PED)

Positive Energy Districts as a tool for cities to address the urban energy transition and climate-neutrality, aiming at

- improving energy security by decentralizing fossil-free energy generation,
- reducing energy demand and providing energy efficiency solutions,
- active interconnection with the regional and national energy systems.

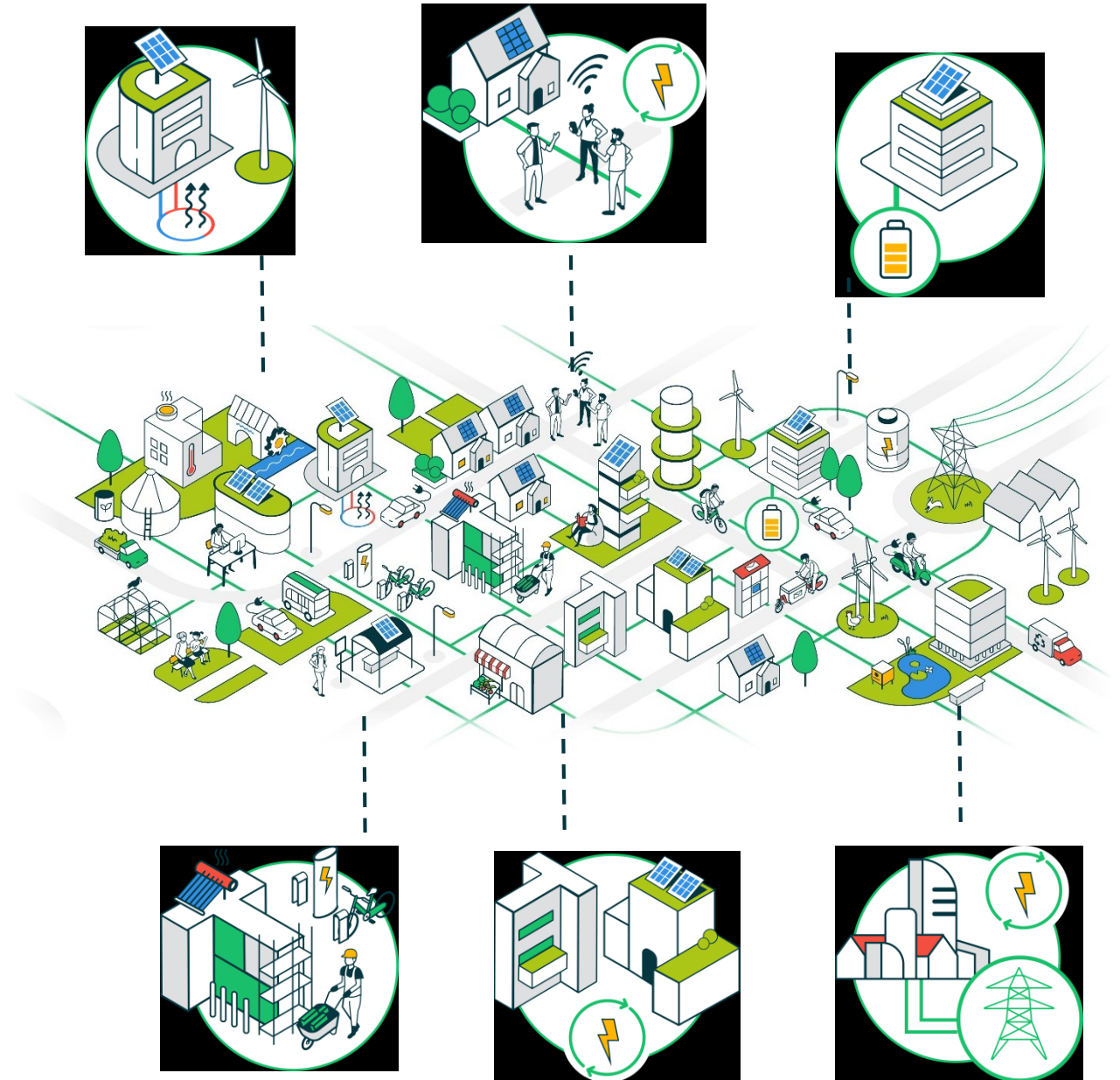
The PED concept follows a holistic approach, combining technological with system and social innovation, with a strong focus on local communities, quality of life and links to greening strategies.

The PED Pathway will initialize 100 PEDs in Europe by 2025 and contribute to the mission on climate-neutral cities with a portfolio of PED solutions until 2030.



PED Priorities

- Aim for high share of locally generated renewable energy
- Energy communities for energy sharing and trading and digital steering of energy use
- Provide and integrate facilities for energy storage
- Reduce energy demand and implement energy efficiency measures
- Interconnect buildings and infrastructure through energy flows between them
- Actively manage energy flexibility and interconnection with the regional energy system



Circular Urban Economies (CUE)

The CUE Pathway operates from the assumption that urban areas should be understood and addressed with respect to their resource use and socio-economic preconditions.

It aims to foster the design of urban places characterized by regenerative urbanism: liveable, inclusive, and green communities that are sustained by circular resource flows.

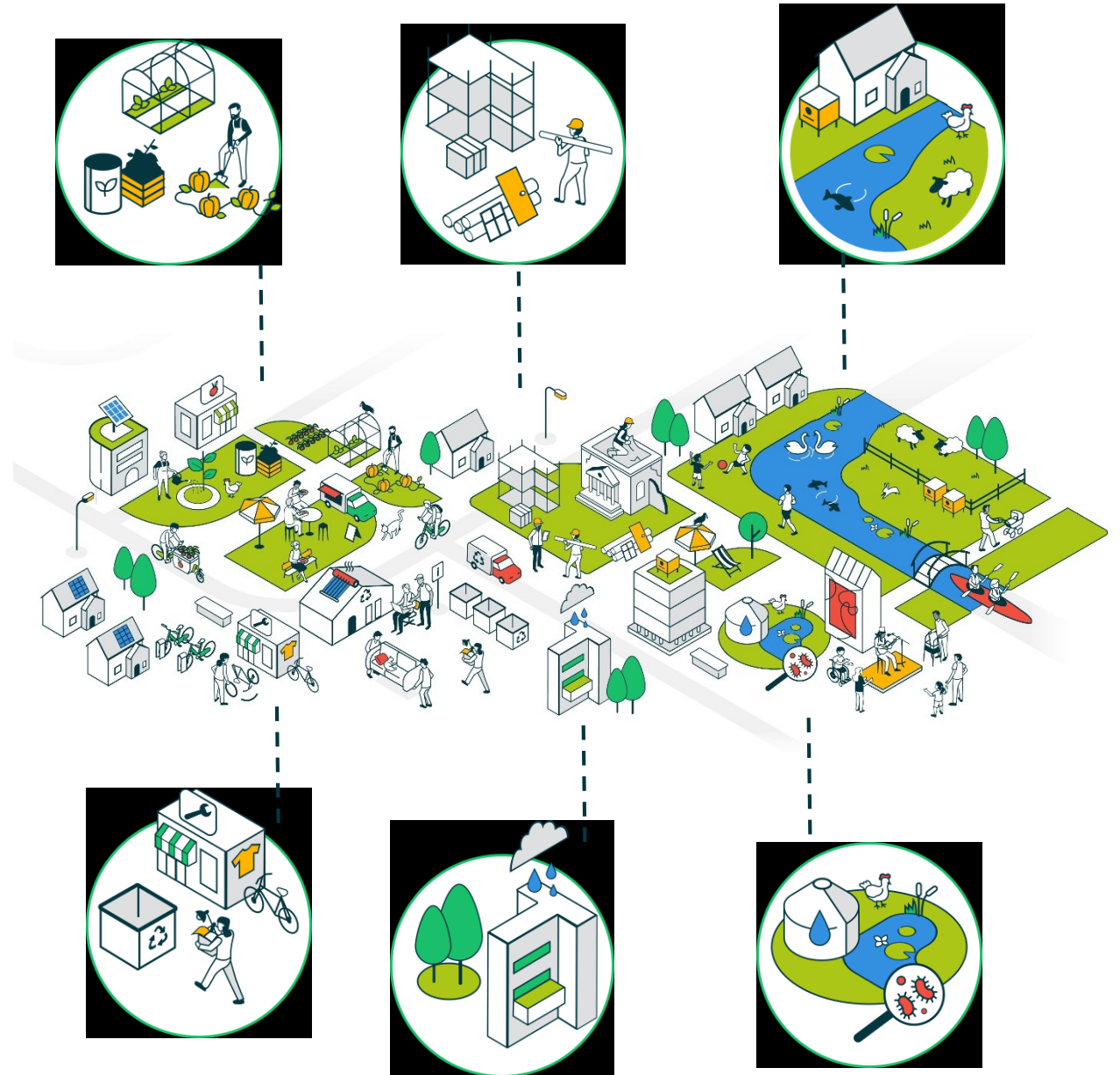
The CUE TP will provide a portfolio of 50+ solutions that can contribute to the circular transformation of urban areas until the end of the partnership.



Contact: Björn Wallsten, Formas
Email: bjorn.wallsten@formas.se

CUE Priorities

- Urban food systems rely on local and regional circular loops
- Construction materials re-used locally and buildings are refurbished and retrofitted
- The city as an enabler of biodiversity
- Resources and tools are shared and maintained locally
- Buildings and infrastructures are climate-proofed
- Blue-green infrastructure are designed to function on nature-based principles





15-minute City (15mC)

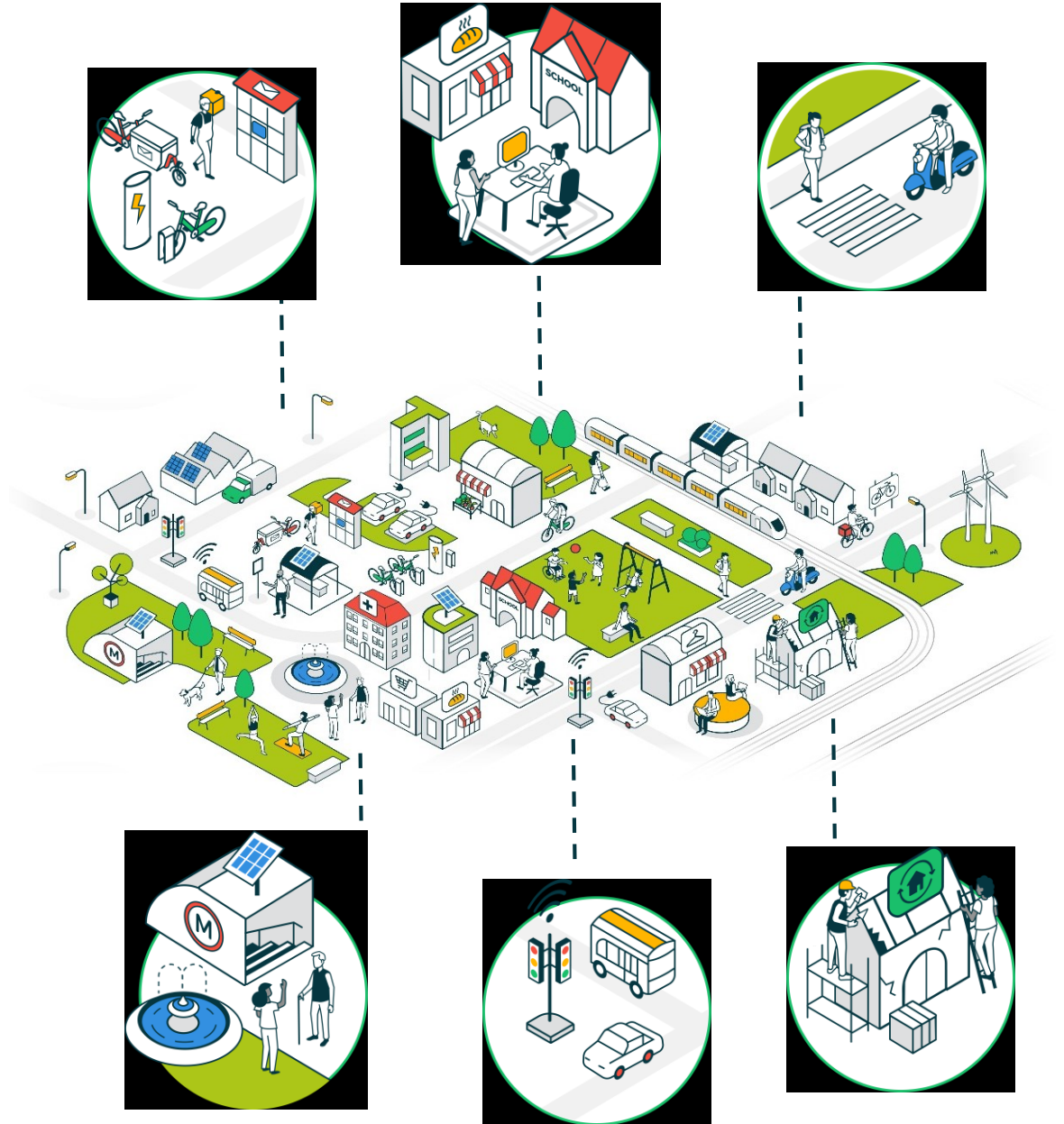
The 15mC Pathway aims at rethinking the urban system holistically to encourage sustainable mobility and transport choices and allocate urban space for integrated neighbourhoods.

It recognises different urban contexts, focuses on transferability and accounts for the diversity of contemporary urban lifestyles to boost action towards climate-neutral, liveable and inclusive cities as a whole.

The 15mC Pathway will build up an Innovation Portfolio and deliver tested experiences and practices of 50+ solutions until the end of the partnership, which have demonstrated high potential for an encompassing urban mobility transition.

15minC Priorities

- Travel shorter and live a good life in mixed neighbourhoods
- Priority for active mobility
- Attractive options for sustainable mobility in the outskirts
- Receive your deliveries sustainably
- Apply data for sustainable mobility
- Activate hidden resources in a neighbourhood



DUT Strategic Roadmap

- Setting priorities together with municipalities and urban actors
- Specifying key areas for action to achieve the Transition Pathway missions
- Indicating a Multi-annual Call Agenda as guideline for funders and interested applicants and stakeholders



DUT Implementation Portfolio

DUT Implementation Measures



STRATEGIC
DEVELOPMENT
OF THE TPS



TRANSFORMATIVE
R&I FUNDING
INSTRUMENTS



JOINT INVESTMENT IN
TRANSNATIONAL
R&I PROJECT



CAPACITY
& COMMUNITY
BUILDING



DISSEMINATION AND
MAINSTREAMING OF
GOOD PRACTICE



VALORISATION OF
SOLUTIONS AND
APPROACHES



PARTNERING WITH
OTHER INITIATIVES



INTERNATIONAL
OUTREACH AND
COOPERATION

PED • 15mC • CUE

A comprehensive set of measures to

- create evidence with and for cities and urban actors, and
- enhance impact of R&I investments for local action

Join the DUT Community!



Engage in the City Panels and jointly set priorities for urban transitions



Join forces, co-design solutions and build capacities through R&I projects



Share and learn from experiences across Europe and be part of an inspirational European community



Benefit from good practice and help bringing innovative approaches into our cities



Driving Urban Transitions to a Sustainable Future

European Partnership under Horizon Europe



Margit Noll

CEO

margit.noll@ffg.at

www.dutpartnership.eu

info@jpi-urbaneurope.eu